

# The 18th Annual BC Witchcamp August 7 - 14, 2005



## **Camp Theme: The Divine Twins**

**Light and Shadow, Day and Night – Come and explore the Mystery of the Divine Twins.**

**Found in cultures across the world, the Divine Twins go by many names, among them Freya and Freyr; Llew and Balor; Legba and Carrefour; Artemis and Apollo; Bylebog and Chernabog.**

**The Divine Twins are at the heart of Feri tradition myth, and thus at the roots of Reclaiming where they are known as the Blue God and the Red God, the Winged God and the Serpent God. Miria bore them first, and the twins together form a third, the Peacock Lord. His tail is the many-hued fan of feathers, each with an eye of the Goddess peering out at us, driving the mystery home into our very eyes.**

**During the week, we celebrate our own Divine and Twin nature, exploring sacred stories. We ride forward as the child of the Sun card, bathed in the light of the Goddess.**

**The brighter Her light, the more we see our shadow. What parts of our being do we relegate to the shadows? What do we bring into the light? This week we will explore our whole being, to know ourselves in all our parts.**

## BCWC 2005 Teaching Team

A message from our teachers: "Our intention for co-creation at camp is to foster collaborative efforts between campers, organizers, teachers and the many realms to work the magic of camp. Stepping into the full Sun of co-creation we empower personal authority and acknowledge that we all are and have always been co-creators. Co-creation requires that we steward our selves – tending our Divine Twins of light and shadow with compassion, honesty and responsibility. We invite each member of this community to bring awareness, transparency and intention into the ritual of this week. To weave today what we choose for the future. So mote it be."

**Rose May Dance** My spiritual practice is life-long, and I have worshiped the Goddess since 1979 and have been in Reclaiming since 1981. A mother and grandmother, I live collectively in San Francisco. My issues – direct politics, open adoption, anarco-feminism. I have taught witchcraft and related subjects since the 80's. and at witchcamps since the beginning, including the first BC camp in 1987 and through 1990. Retired from a career in social research with injection drugs users, I practice Hypnotherapy. Interests / skills: nature worship, devotion, healing, ritual craft, spellwork.

**Morgana** returns to BCWC, where she taught in 2000. Over twenty years of teaching experience; taught at Witchcamps in Texas, Germany, California and British Columbia. Creates, produces, and teaches theatrical, magical and ritual arts. She is the co-founder and producing artistic director of *The Vortex*, a regional alternative theatre in Austin, Texas – produced more than 200 shows over the past 16 years. Loves dark Goddesses, singing, swimming, and dancing with Fire. She lives with her husband, Chad, and many lovely cats, fish, and faeries.

**Scott Mist** Oriental medicine practitioner, researcher, teacher, and banjo rock star – if he knows the chords and it doesn't require singing. Currently finishing a Ph.D. in Portland, OR. Some call him a science geek. An initiated priest of the Reclaiming and Feri traditions, teacher since the early 90's. His magical practice is strongly influenced by myth, movement, his connection to the Gods, the Ancestors and personal practice. Often questions the status quo. Has a vision of our community answering and honoring our myriad sacred callings that reflect the diversity of our practices.

**Gwenyth Brigit Dwyn** (MA, Counseling Psychology) Feminism, Christian mysticism, theatre and story have been her defining influences. Life's work has centered on facilitating spiritual communities. Lived, learned and taught at Diana's Grove (1997 – 2002). Their tradition of inclusion, empowerment and sacred community has roots for Gwenyth in her Quaker faith and practice. An expert facilitator, she weaves inclusion, empowerment and personal accountability into day-to-day magic, integrating breath and silence as pathways to personal transformation and communal understanding. Involved with Reclaiming since 1994; taught at Winter, Midwest and Vermont camps.

**Medusa** Priestessing in the San Francisco community for 10 years; helped midwife a new Reclaiming community, the Cauldron of the Valley. A Reclaiming and ferri initiate, she enjoys teaching Reclaiming and tarot classes; practices mother magic with her two teenagers. Her house is filled with music – piano, drums, guitars and voices. Her backyard's dedicated to Brigid and the Fey, the bedroom is dedicated to the blue god. Feeds her soul by communing with the gods, great sex with her soul mate, practicing her art, cooking, eating chocolate ice cream in the hot tub. She was last at BCWC in 2003.

### Student Teachers

**Rhannon** Singer, drummer, teacher, healer and mother currently rooted in Portland, OR. She's spent the last 7 years attending medical school, having babies, doing public ritual work and teaching as a founding member of *Hands of the Mother*. Currently busy raising two children (ages 1 and 4) and a small but growing Naturopathic medical practice in Salem, OR. She has been busy studying ferri, building a personal spiritual practice, and cultivating her teaching skills while on "maternity leave" from camp for the past few years, and is very excited to be back!

**Feral** loves the ecstatic co-created rituals of the Reclaiming tradition and the swirling cauldron of Witchcamp. Married, mother to an 11 year old son, a Dreamweaver (organizer of Midwest Witchcamp). College teacher of the mysteries of molecular biology in Denver, researcher into the microbiology of human waste disposal, faculty union organizer helping fend off neoconservative control of curriculum. She loves intentional drumming and trance work. Founder and member of a moon lodge that celebrates women's blood mysteries and the turning of the magical wheel.

## Path Descriptions

### Relationship with Deity with Feral and Scott Mist

A whisper, a shout, an ecstatic connection to deity, a deepening of relationship. Rooted in authentic self, we will explore both shadow and light in the pursuit of a closer connection to the gods. Each of us will connect with one of the many manifestations of the Star Goddess, using the skills of trance and tending, movement, divination, altar building, silence and voice. We will develop and deepen our relationship to divinity, thru exploration of altered states in this intermediate / advanced path. If this calls to you, please email Scott at [scott.mist@teleport.com](mailto:scott.mist@teleport.com) for preparatory work before camp.

### Elements

#### with Medusa and Student Teacher

In this path we begin the practice of Magic, Witchcraft and Goddess spirituality by working with the Elements of Magic: Earth, Air, Fire, Water and Spirit. With the art of magic, we deepen our vision and focus our will, begin the exploration of shadow and light, empowering ourselves to act in the world. Techniques include: visualization, sensing and projecting energy, chanting, trance, creating magical space, spellcraft and structuring rituals. Group experience follows feminist consensus process. This is a recommended path for those new to Reclaiming or those who want to hone their skills.

### Ecstasy in Nature Path

#### with Rose May Dance and Morgana

We open our senses to the magic and power of Ecstasy in Nature, within and without. Exploring Sun and Shadow – inside of ourselves and outside in bountiful nature – we use voice, enchantment, prayer and shapeshifting to develop transformational tools for our personal practice and our practice in the world. We commune with the beauty and spirits of the land at Evans Lake. This intermediate to advanced path is intended for those with previous magical experience or training. Solid shoes and adventurous spirit recommended.

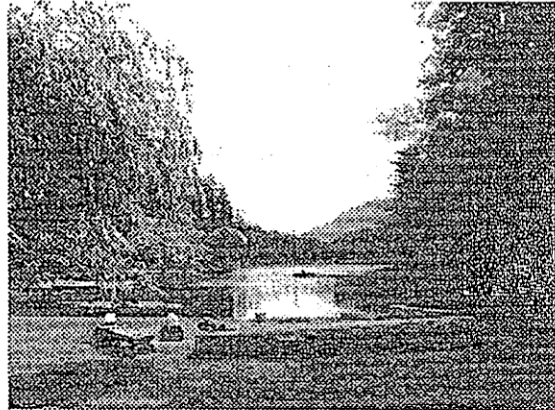
### Co-Creation: Sacred Community in Action with Gwenyth Brigit Dwyn and Rhiannon

Co-creation is one of those words that holds many realities. It is communion, desire, vulnerability, authenticity, connection, letting go, holding on.

It is making a profound commitment to wholeness. It is sacred interaction. An invitation to Mystery. Soul-healing. To learn the skills of co-creation we must actively co-create. This path invites you to be an active participant in co-creating reality moment by moment. The Divine Twins will guide and hold the work. We, together, will shape it. Bring your desire and your willingness to let life matter deeply. Participants in this path can choose to deepen the skills of ritual co-creation by facilitating the community in co-creating one of the evening rituals.

### All Camp Co-Created Ritual

We will offer the opportunity to take the skills of co-creation into practice. Afternoon time will be set aside for those who feel led to explore the magic of a camper co-created ritual. Open to all campers and facilitated by folks in the co-creation path.



### BCWC Camp Location

Evans Lake Forestry Camp is north of Vancouver and Squamish. The site offers a feeling of seclusion but is serviced with all basic amenities. (view at <http://www.evanslake.com>) Linda Beet says: "Evans Lake is a lovely spot. A gorgeous warm clear little lake all to ourselves with lots of big campfire circles in the woods, tenting spaces, a big flat field, a huge, huge dock (dock magic!) and a really nice feel to it. It's a Forest Education Centre (not religion – not sports) and the forest feels really friendly, safe, well loved and looked after with lots of little mossy outcrops for private magic. There's a froggy bog, and another lake an hour's hike away. There are good people taking care of the land who are not bothered by witchy goings on, me thinks. Evans Lake has a good feel to it all around."

## Accessibility

The camp is situated on somewhat hilly terrain and not conducive to wheelchairs, but call/write and talk to us about your concerns.

## Diversity

We honour the diversity in all people and welcome all races, sexual orientations and differences of life situation, background and ability that increase our diversity. We accept adults 19 & older; exceptions are occasionally made for mature teens (16 – 18) with written permission from parents or guardians. Unfortunately we cannot accommodate children.

## Drug & Alcohol-Free Camp

Please, no drugs (other than prescriptions) or alcohol at camp. This is a firm (and possibly only) rule! Thank you for honouring this tradition.

## Nudity

YES! but not in dining hall or near to staff residences.

## Accommodations

Cabins are centrally located, electrically heated with bunk beds. There are hot showers in the washhouses. A large recreation hall will provide indoor space for rituals when needed.

## Tents

There is tenting space on a grassy lawn behind cabins; as well, there are some spots in the woods for people who want privacy. Registration fee is the same as for cabins. Space is assigned on a first come, first served basis.

## Meals

Three delicious meals are served daily in the dining hall with vegetarian and some meat options. We will strive to offer non-dairy and wheat-free meals for those who require it. However, please know that it is not possible to meet every dietary requirement. For severely restricted diets, please think about bringing supplements to camp meals. Complete the Food Section on the registration form. There are no cooking facilities available to campers.

## Smoking

Smoking is limited to designated outside areas. There is no smoking inside any buildings.

## Marketplace

A vibrant and colourful market reflects the creativity and diversity of our community while providing a lively meeting place each day after dinner. You must be a registered camper to be a vendor. Vendors contribute 13% of sales and services to our Financial Assistance Fund. The Witches' Funk Trunk Boutique is a very cool and funky place to shop. Donations of used-but-good ritual wear, costumes, and accessories are welcome.

## Transportation to Camp

Evans Lake is a 1 – 1/2 hour drive from Vancouver, depending on traffic and road construction. Parking is limited and carpooling is recommended – fewer cars are good for the environment. If you can offer a ride or need one, please fill out the information on registration form.

## Registration Fee

*Sliding scale:* \$435 – \$625 CAN, \$375 – \$520 US  
Pay somewhere on this scale according to your financial ability. We count on as many of you as possible to pay on the mid to high end of scale. We believe in the magic of abundance and are grateful to all of you for your efforts to keep camp solvent and provide scholarships and work exchanges.

## To Register

Complete and return the registration form with deposit and post dated cheques. Include two #10 self-addressed stamped envelopes (4"x 9"). *Note to US residents: please send \$2 in lieu of stamps as we cannot use US stamps.*

## Payment Options

Please pay by money order or personal cheque. A minimum deposit of \$150 CAN or US is due when registering. 1) Pay in full when registering or 2) Make payments in 1, 2 or more postdated cheques included with registration. Final cheque to be dated no later than July 8. NSF cheques will be charged a \$15 fee and may result in being put at end of waiting list.

## Confirmation

Letters of confirmation with map and a list of what to bring will be mailed starting May 15th.

## Cancellations

Received before July 8: full refund less \$75 fee.  
After July 8: deposit forfeited unless the place can be filled. After July 30: No refunds.

## Financial Assistance

Work Exchange – A limited number of financial assistance options are available. Energetic, strong, versatile people required. Working on the team is a service to our community ... and fun! Get to know the inner workings of camp! To apply, write a letter stating your financial situation, organizational and other relevant skills. Indicate Option A or Option B. *Option A*) 50% fee reduction • Arrive Saturday August 6th for camp setup. Must be able to get to camp on your own. Stay afternoon of August 14th for final tasks. Assist Organizing Team during the week. You pay: \$218 CAN or \$188 US  
*Option B*) 30% fee reduction • Assist organizing team during the week. Your fee: \$290 CAN or \$250 US.

## Subsidies

\$60 CA or \$50 US subsidies are offered to people needing minimal assistance. Please include a letter of request and a \$150 deposit with registration. Applications should be in by May 15th. Applicants will be notified by June 15th.

## The Activist Scholarship

One of the strengths of Reclaiming is our commitment to bring magic into the world, transforming consciousness. Many of us are actively involved in transforming our local communities and world. BCWC is providing a scholarship to a front line political action activist so they benefit from the spiritual renewal of camp, and strengthen the link between our magic and our activism. The scholarship is open to anyone who self identifies as a witch or agrees with the values in the Reclaiming Principals of Unity, and who volunteers regularly for activist work. All applications for scholarships, work exchange or subsidies should be sent by May 15th, 2005 to [infobcwc@yahoo.ca](mailto:infobcwc@yahoo.ca) or write to Stacey Boal, 426 Powell St, Victoria, BC, Canada V8V 2J4. Applicants will be notified by June 15th of acceptance. All of the funds raised for scholarships come from generous donations and the many unique and wonderful ways we raise money each year. We encourage you to organize fundraising events before camp to raise funds for scholarships.

Hold onto this brochure. Your confirmation packet will answer most of your questions! If not, please write us at [infobcwc@yahoo.ca](mailto:infobcwc@yahoo.ca) or call (604) 253-7189. Check our web site at <http://www.bcwitchcamp.org/>